

# clever



## Flat 1 Whitefield House, Whitefield Terrace Greenbank Plymouth, PL4 8NH

**£153**

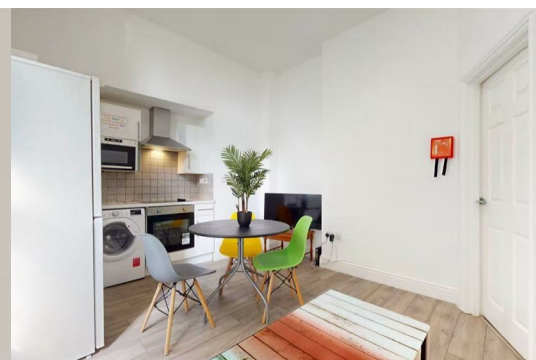
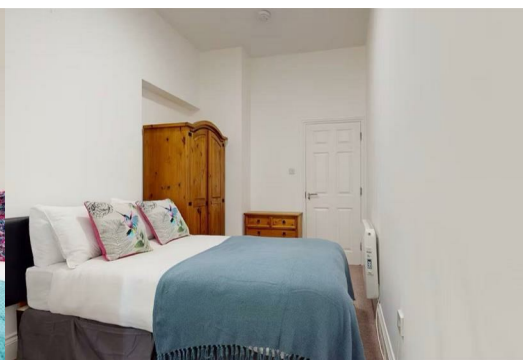


AVAILABLE SEPTEMBER 2026

Welcome to Flat 1, Whitefield House, a delightful three-bedroom student flat located in the vibrant Greenbank area of Plymouth. This property is ideally situated, offering easy access to the university, making it a perfect choice for students seeking convenience and comfort.

The flat features a spacious reception room, providing a welcoming space for relaxation and socialising. The three well-proportioned bedrooms are designed to accommodate your study and living needs, ensuring a comfortable environment for all residents. The bathroom is functional and well-maintained, catering to the daily requirements of student life.

One of the highlights of this property is the communal garden, which offers a lovely outdoor space for residents to enjoy fresh air and social gatherings. Additionally, parking is available for one vehicle, although this comes at an extra cost, providing flexibility for those who may require it.



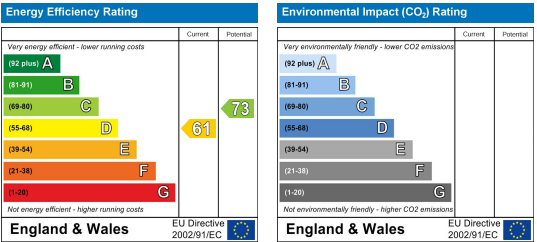
Area Map



Floor Plans



Energy Efficiency Graph



These particulars, whilst believed to be accurate are set out as a general outline only for guidance and do not constitute any part of an offer or contract. Intending purchasers should not rely on them as statements of representation of fact, but must satisfy themselves by inspection or otherwise as to their accuracy. No person in this firms employment has the authority to make or give any representation or warranty in respect of the property.